

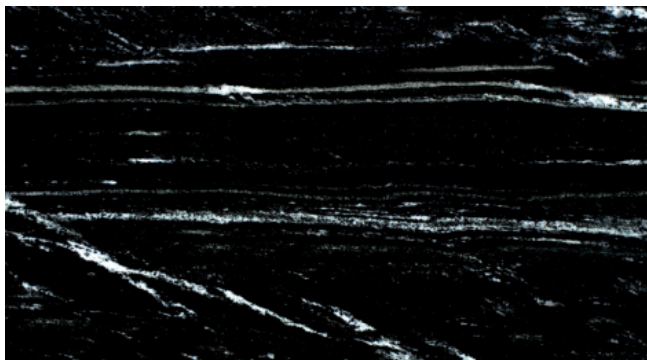


# STONE DESIGN

Premier Supplier of Natural Stone, Engineered & Recycled Products

<http://www.Stone-Design.com>

## LYNX (VIA LATTEA) POLISHED/SUEDE



### Material

Granite

### Color

Black

### Stock Finishes

Honed, Leather/Suede, Polished

### Stock Sizes

Slabs - 3cm

### Durability/Uses

Interior Flooring, Interior Walls, Kitchen Counters, Other Counters

### Flooring Application

Acceptable for use on interior flooring applications.

Cut-to-size for flooring applications from slab material.

### Maintainance

Use DryTreat penetrating sealers to seal your stone, and Hannafin cleaners to keep it beautifully maintained. Some stones may benefit from the application of Enhance Plus. Click [here](#) to read more about DryTreat Sealers & Cleaners.

### Notes

Part of the Antolini Signature Stone Collection.